

**PL**

**INSTRUKCJA ODWRÓCENIA SZUFLADY**

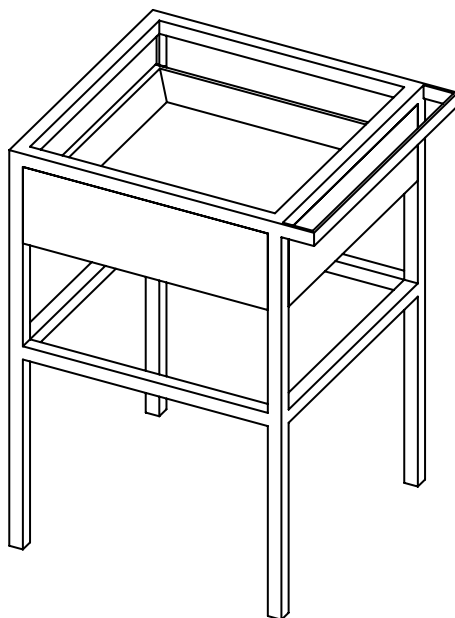
**EN**

**DRAWER POSITION CHANGE**

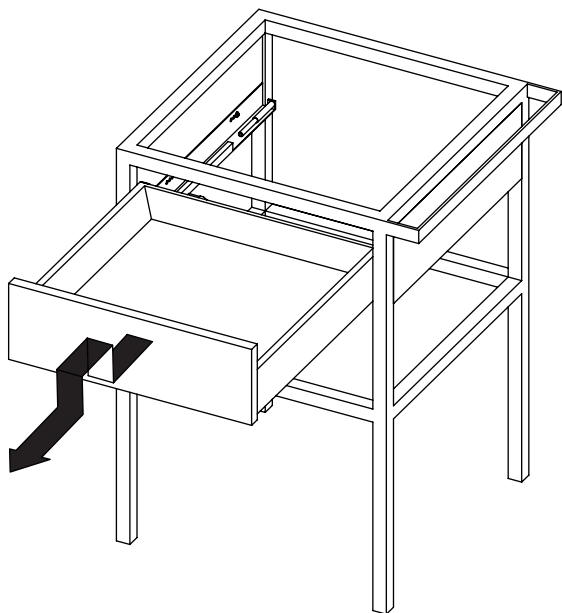
**RU**

**ИНСТРУКЦИЯ ПО ПЕРЕВОРАЧИВАНИЮ ПОЛКИ**

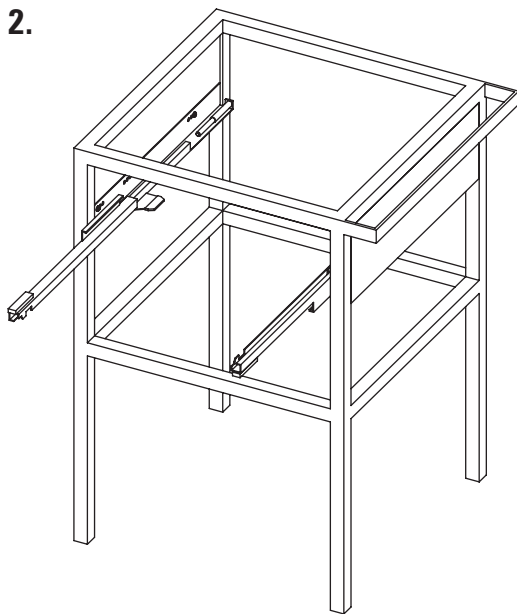
**deante**



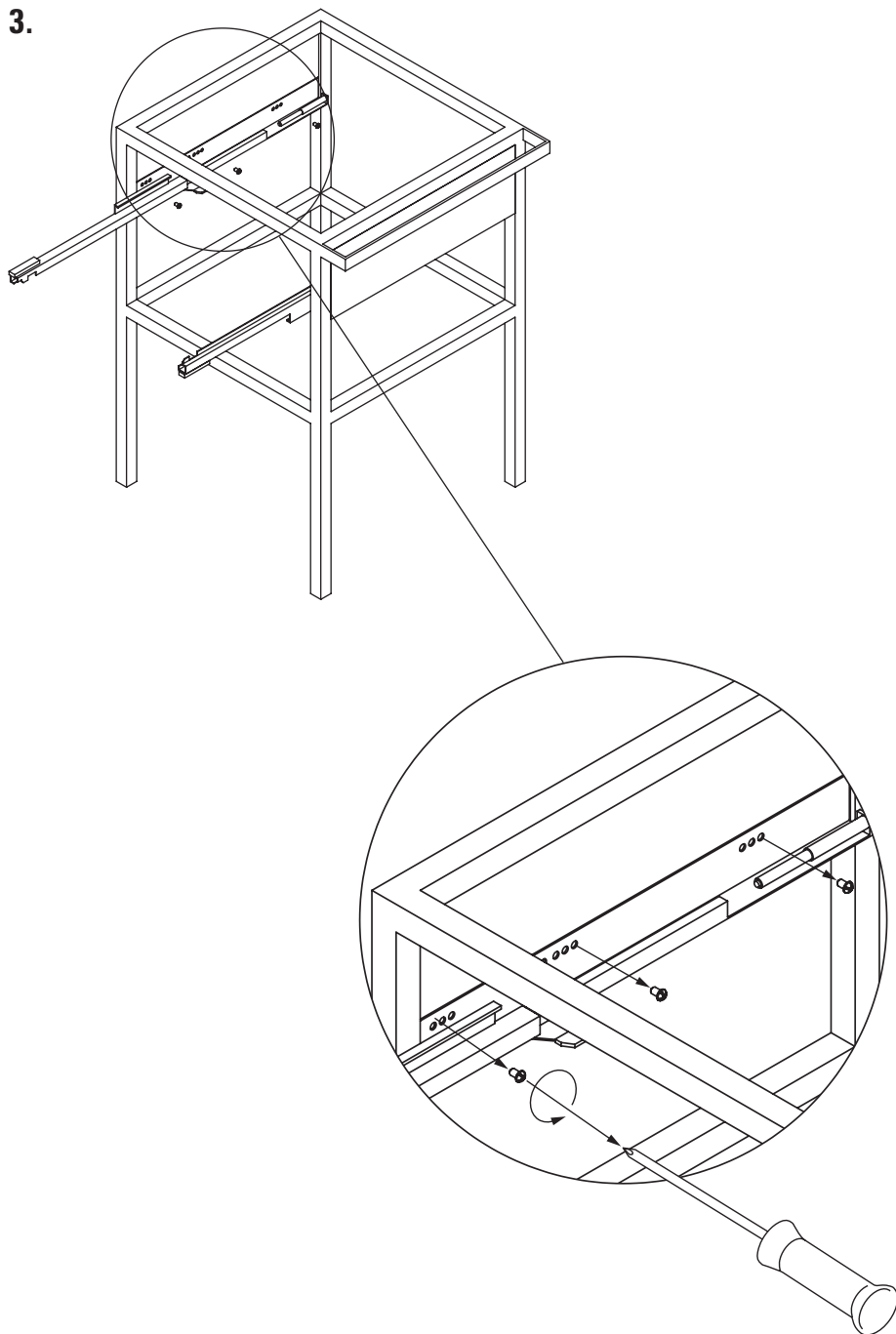
1.



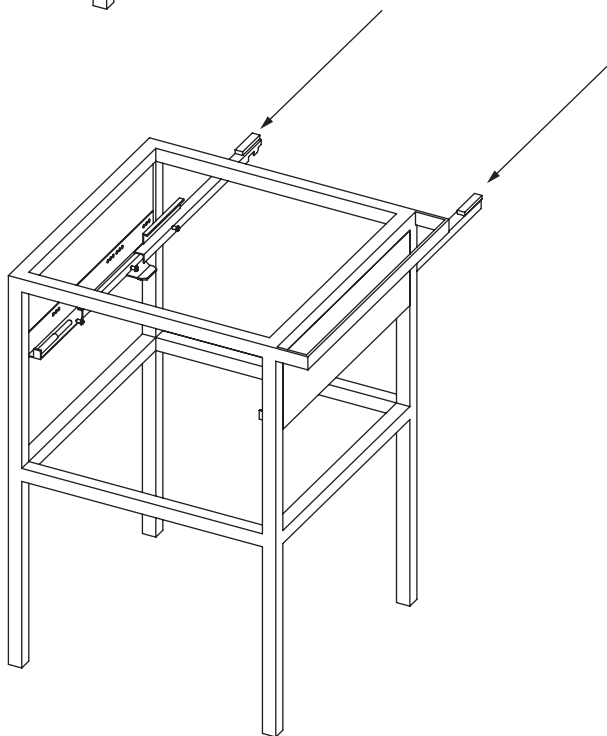
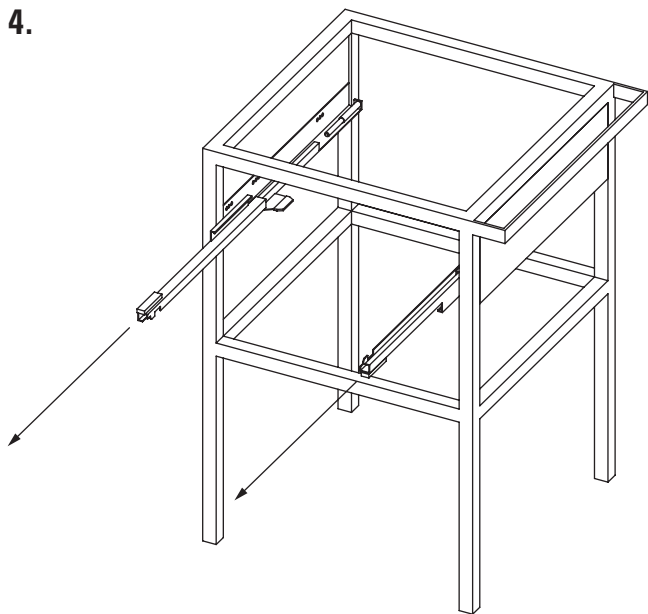
2.



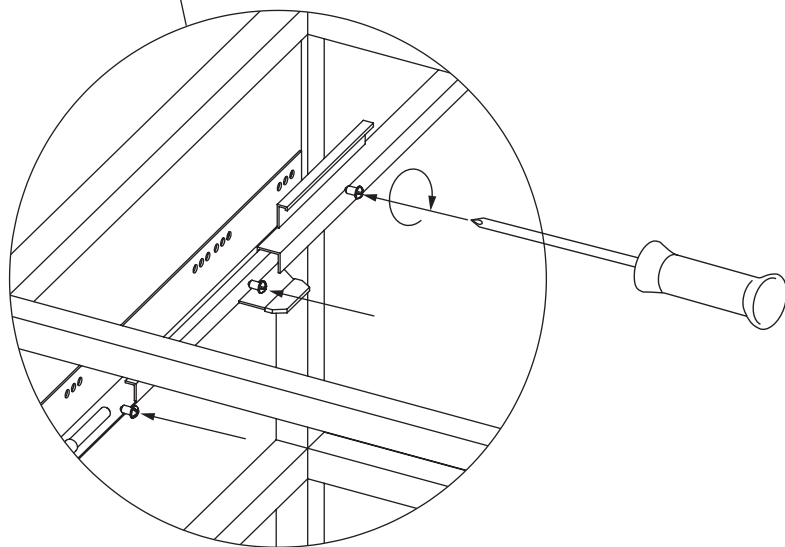
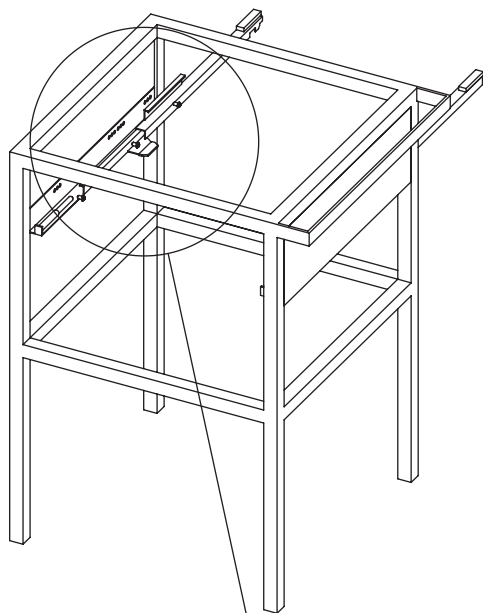
3.



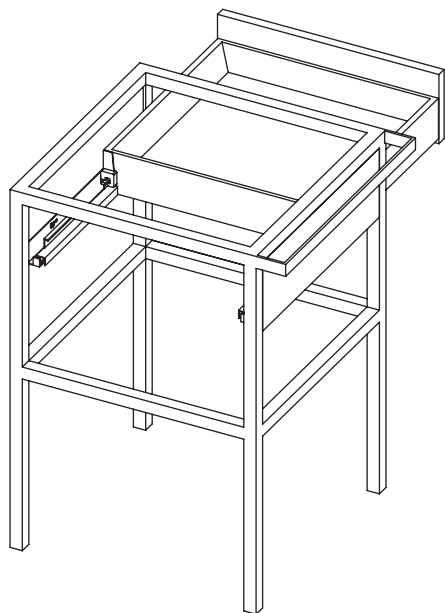
4.



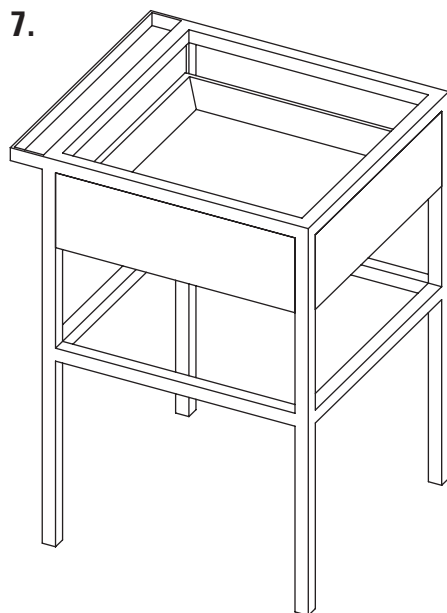
5.



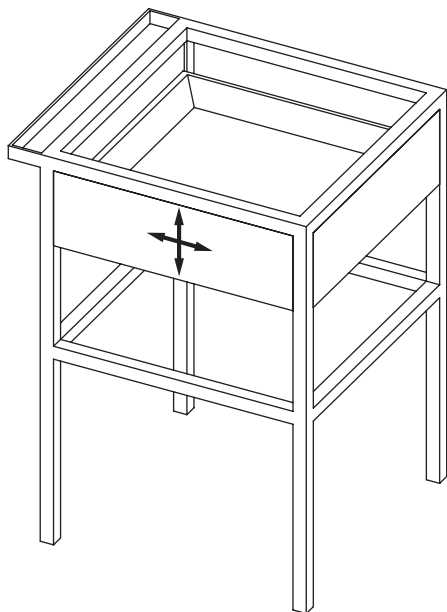
6.



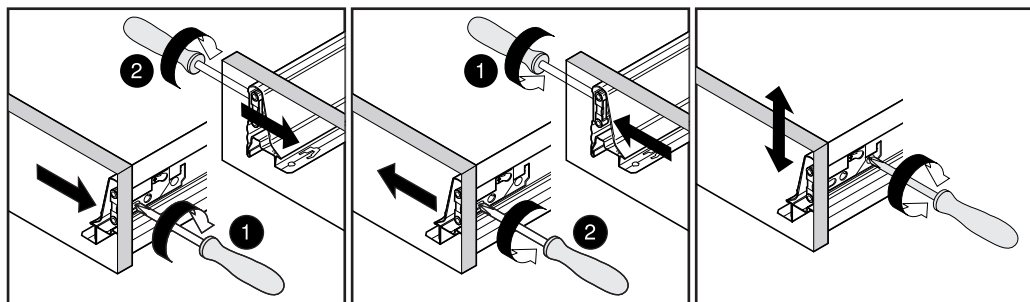
7.



8.



REGULACJA / ADJUSTMENT / РЕГУЛИРОВКА



1 mm

1 mm

± 2 mm

